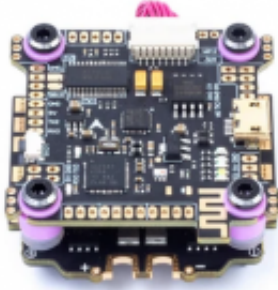


Link do produktu: <https://www.nobshop.pl/stack-mamba-f722s-f60pro-3-6s-power-tower-stack-p-2206.html>



Stack MAMBA F722S F60PRO 3-6S Power Tower Stack

Cena brutto	516,60 zł
Cena netto	420,00 zł
Dostępność	Aktualnie niedostępny
Czas wysyłki	1 - 3 dni
Producent	DIATONE

Opis produktu

MAMBA F722S F60PRO 3-6S Flight Controller Stack

Mamba F722SF60PRO to zestaw dla najbardziej wymagających. Ogromna moc w połączeniu z idealnie dobranym kontrolerem lotu dają pełną satysfakcję z każdego pokonanego metra w powietrzu.

Oprogramowanie (Target): Mamba F722 [Legacy]

FC Specyfikacja

MCU: 216MHz STM32F722RET6 32BIT

IMU: MPU6000

Baro: No

OSD: BF OSD

Blacbox: 16M Flash Memory

Uarts: 6Set

ESC Soft: Dshot300/600/1200

ESC Telemetry: RX6

LED: Blue&Orange for FC Status,,Green 9V,White 5V,Red 3.3V

LED Kontroler: 4 Set 2812 LED

Bluetooth: SpeedyBee APP

Smartaudio: Tak

RSSI: Tak

Buzz: Tak

Wejście: 3~6S Lipo (12.6~25V)

VTS Ochrona: Tak

BEC: 5V 2.5A & 9V 2A (Max 3A)

ESC Specyfikacja

F60PRO

Napięcie wejściowe: 3~6S Lipo (12.6V~25V)

CONTINUE CURRENT: 60A×4

BURST CURRENT: 75A (10S)

BEC: NO

ESC: Dshot300/600/1200

Mocowanie: 30.5mm/M3

Kondensator : Panasonic High Frequency 470uF/35V

FC Oprogramowanie

BetaFlight

Target: MAMBA F722 [uploading...]

Mocowanie: 30.5×30.5mm,Φ3

Waga: 23.5g

W zestawie:

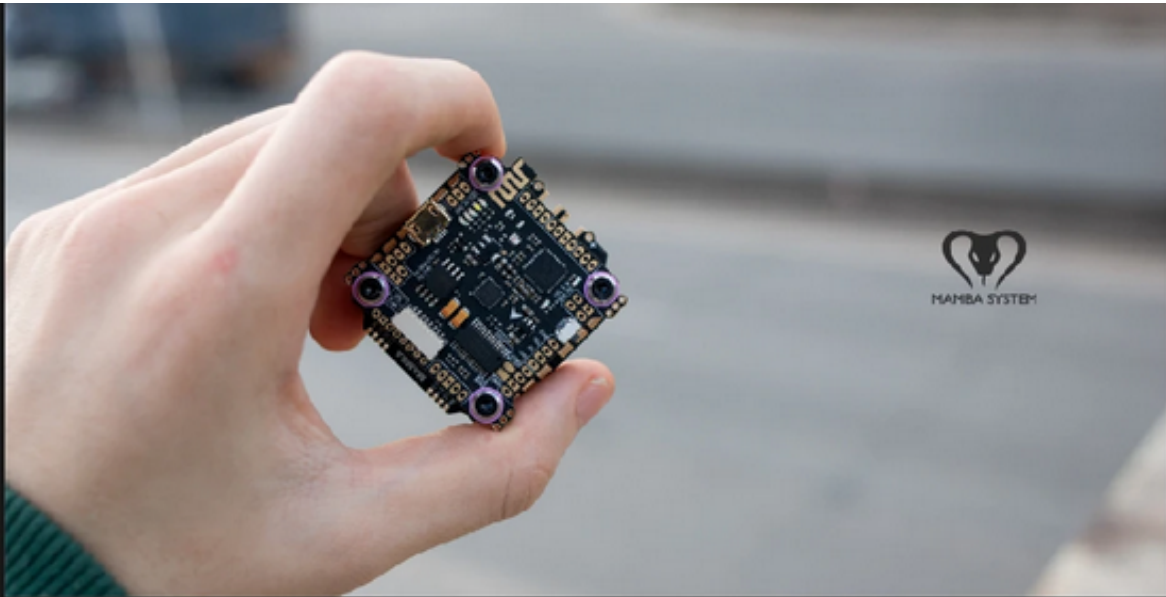
1×FC MAMBA F722S STACK



Identifier	Configuration/MSP
USB VCP	<input type="checkbox"/> 115200 ▾
UART1	<input type="checkbox"/> 115200 ▾
UART3	<input type="checkbox"/> 115200 ▾
UART4	<input checked="" type="checkbox"/> 19200 ▾







MAMBA STACK F722S Bluetooth 3-6S 32bit Dshot1200

- F50 PRO 6S Lipo 32bit Dshot1200
- F60 PRO 6S Lipo 32bit Dshot1200

Product Description

With WS2812's LED controller, there is no need to purchase and weld additional modules.

WS2812LED is welded on the FC and can use it directly. More importantly, you will skip complex software Settings and switch between different colors and flashing modes with only one button.

Updated part:

- 1> 3.3v receiver power supply added
- 2> More TX1 soldering pad
- 3> Reduce the width of mounting gap of shock absorber ring
- 4> Use a firmer MICRO USB

Feature Introduction

- With 2 integrated BEC systems, you can choose to use 9V or 5V. 9V can provide pure power and make the picture look clearer. The 5V/15W BEC not only can provide enough power for receivers and camera etc. but also can 48 WS2812 leds at the same time.

- WS2812 LED Controller
Now you can switch 9 colors and different flash modes through the built-in LED controller in F722s. We have set everything in the program. This is very simple, and does not even require any settings, just need to connect them.

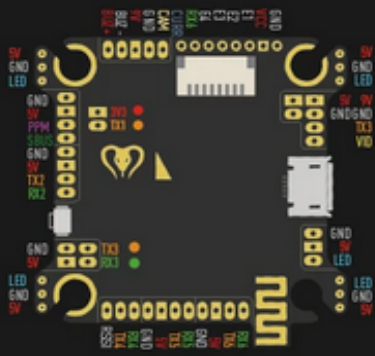
- Betaflight APP
This is an innovative attempt, through the 2.4G bluetooth module, doesn't need a PC can do every BF setting job. If you often go outdoor flying, leave your heavy computer at home, just take your phone with you, even doesn't need a cable, the APP on your phone can manage all BF setting.
Thank Speedy Bee's technical support for this great idea!

- Betaflight APP

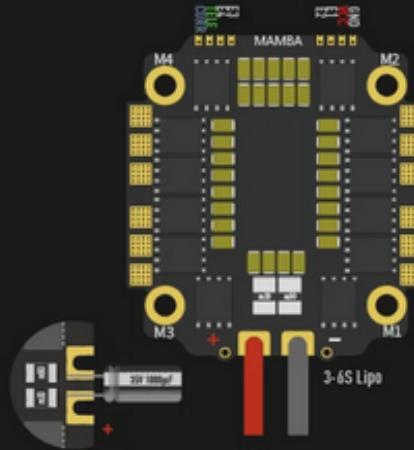
This is a Innovative attempt, through the 2.4G bluetooth module, doesn't need a PC can do every BF setting job. If you often go outdoor flying ,leave your heavy computer at home , just take your phone with you , even doesn't need a cable, the APP on your phone can manage all BF setting. Thank Speedy Bee 's technical support for this great idea !

Before using the product,you need to know

F405 DJI



F50/50PRO/60PRO

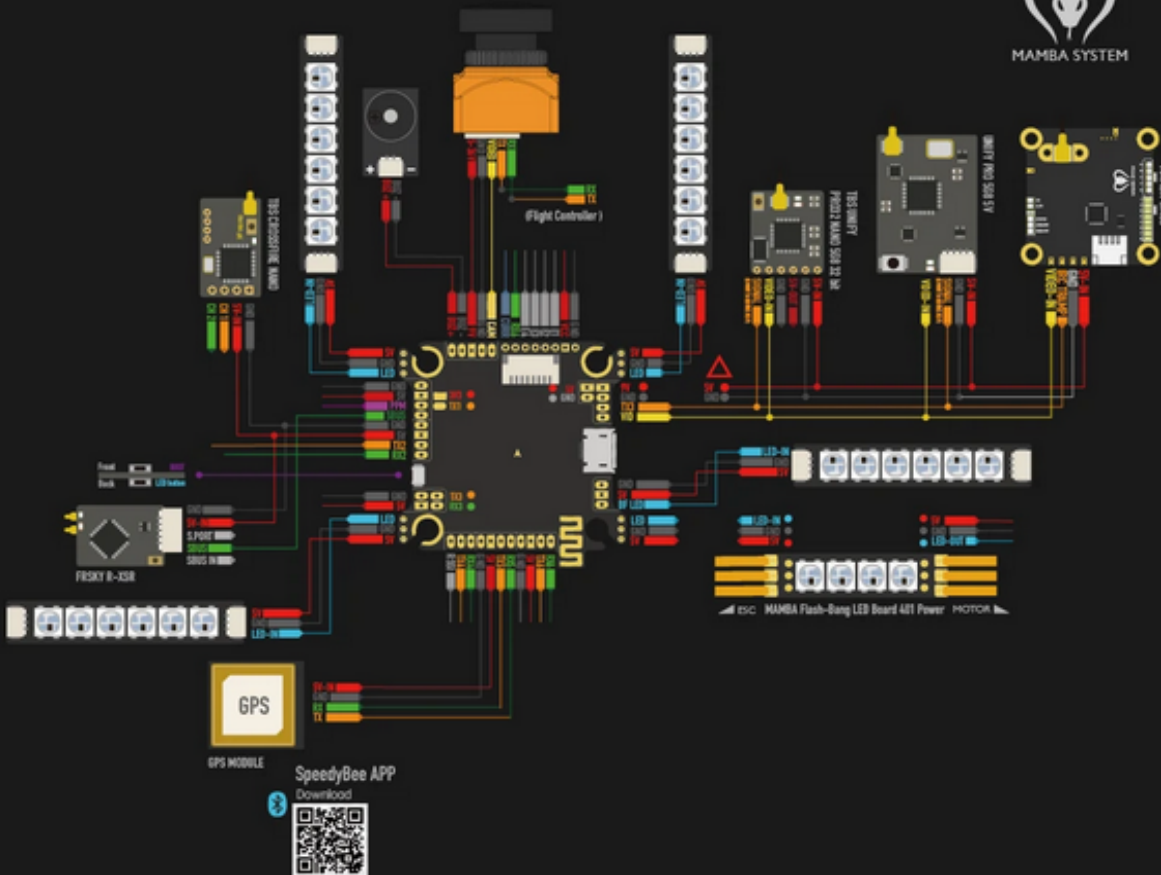


⚠ Capacitor requested when using 6S battery

connection diagram



MAMBA SYSTEM



- Receiver setup

DSM2/DSMX

TBS CROSSFIRE NANO

FRISKY R-XSR

Identifier	Configuration/MSP	Serial Rx
USB VCP	<input checked="" type="checkbox"/> 115200	<input type="checkbox"/>
UART1	<input type="checkbox"/> 115200	<input checked="" type="checkbox"/>

Receiver

Serial-based receiver(SPEKSAT, SI) Receiver Mode

Note Remember to configure a Serial Port via Ports tab and choose a Serial Receiver Provider when using RX_SERIAL feature.

SPEKTRUM1024 Serial Receiver Provider

SPEKTRUM2048

Identifier	Configuration/MSP	Serial Rx
USB VCP	<input checked="" type="checkbox"/> 115200	<input type="checkbox"/>
UART2	<input type="checkbox"/> 115200	<input checked="" type="checkbox"/>

Receiver

Serial-based receiver(SPEKSAT, SI) Receiver Mode

Note Remember to configure a Serial Port via Ports tab and choose a Serial Receiver Provider when using RX_SERIAL feature.

CRSF Serial Receiver Provider

Identifier	Configuration/MSP	Serial Rx
USB VCP	<input checked="" type="checkbox"/> 115200	<input type="checkbox"/>
UART1	<input type="checkbox"/> 115200	<input checked="" type="checkbox"/>

Receiver

Serial-based receiver(SPEKSAT, SI) Receiver Mode

Note Remember to configure a Serial Port via Ports tab and choose a Serial Receiver Provider when using RX_SERIAL feature.

SBUS Serial Receiver Provider

SPECIFICATIONS

• SPECIFICATIONS OF FC

MCU	STM32F722RET 6
Frequency	216 MHz
IMU	MPU 6000
OSD	AT7456E
Blackbox	16 M Memory
Uarts	6 Set
Receiver	TBS/PPM/SBUS/IBUS/DSM
RSSI Pad	Yes
Buzzer Pad	Yes
CURR Pad	Yes
Motor	4 Set
BEC 3.3V	0.5A
BEC 5V	2A
BEC 9V	2A
MB LED	Yes
BF LED	Yes
Bluetooth	Yes
Input	6S Lipo
VTSProtection	Yes
Soft	Betaflight
Target	MAMBAF 722
Mounting	30.5×30.5mm 3
Size	41.5×41.5×7.5mm
Weight	7.5g

• SPECIFICATIONS OF VTX

Power /mW	PIT /25/200/400
CH	40CH
Connector	IPEX
Input	5V
IRC	IRC Tramp
Mounting	20x20mm 2
Size	24.0x24.0x5.5mm
Weight	4.7g

• SPECIFICATIONS OF ESC F50PRO /F60PRO

CURR	Yes	Yes
Telemetry	Yes	Yes
BEC	No	No
Output Current	50A	60A
Peak Current	55A	75A
Input	6S Lipo	6S Lipo
BL	BL32	BL32
Target	MAMBA F50 PRO	MAMBA F60 PRO
Agemet	Dshot 300/600/1200	Dshot 300/600/1200
Mounting	30.5×30.5mm 3	30.5×30.5mm 3
Size	45.0×41.0×6.5mm	45.0×41.0×6.5mm
Weight	15 g	15 g

Power&Battery

Battery

Onboard ADC Voltage Meter Source

Onboard ADC Current Meter Source

3.3 Minimum Cell Voltage

4.3 Maximum Cell Voltage

3.5 Warning Cell Voltage

0 Capacity(mah)

Voltage Meter

Battery 1.8V

110 Scale

10 Divider Value

1 Multiplier Value

Amperage Meter

Battery 0.00A

115 Scale[1/10th mV/A]

0 Offset[mA]

