

---

Dane aktualne na dzień: 29-06-2026 10:41

Link do produktu: <https://www.nobshop.pl/stack-mamba-f405dji-f50pro-3-6s-blheli-32-50a-dshot1200-p-2069.html>

## Stack MAMBA F405DJI F50PRO 3-6S BLHeli\_32 50A Dshot1200



Cena brutto	<b>409,99 zł</b>
Cena netto	<b>333,33 zł</b>
Dostępność	<b>Aktualnie niedostępny</b>
Czas wysyłki	<b>1 - 3 dni</b>
Producent	<b>DIATONE</b>

### Opis produktu

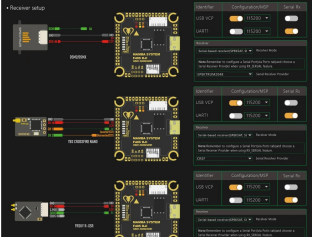
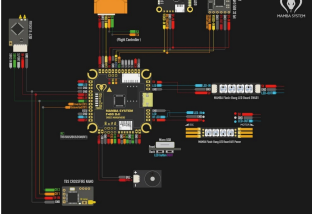
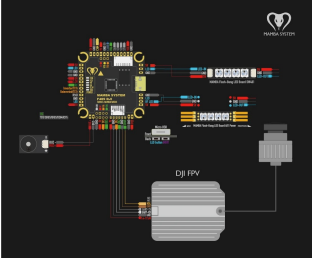
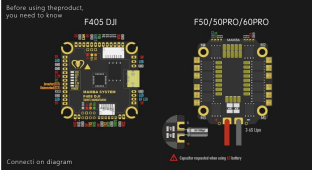


**MAMA STACK F405 DJI 50A 3-4S**  
 • F50 6S Lipo Bait Dahhot200  
 • F50 PRO 6S Lipo 320mAh Dahhot200

**Product Description**  
 DJI FPV has become one of the player's favorite hd vtx.  
 It offers the best of being a receiver, a video stream, which is necessary.  
 MAMA STACK with low impedance of the power supply which provides reliable operation for shooting.

**Feature Introduction**

- DJI FPV 2024 HD
- An experienced original design.
- DJI FPV with special TV power supply, improved the definition quality.
- More UART
- Best designed between MAMA STACKS supports up to 6 sets of UART, it is equipped with multiple sets of TV power supply making the welding more convenient.
- Back up soldering pad
- On the solder pad is attached, which allows you to solder more pins.
- The back solder pad on the internal PCB makes the flight control more durable.



**SPECIFICATIONS**

• SPECIFICATIONS OF FC		• SPECIFICATIONS OF VTX	
MCU	STM32F405RGT6	Power MOS	IRIG550/6W/6S
Processor	STM32F405	IC	ICM42053
RAM	512KB	Receiver	Yes
OSD	256x128	Video	Yes
Function	6.5A Motor	Video	Yes
Material	FR4 PCB, 4000V, 4000V	Video	Yes
UART	Yes	Video	Yes
UART 1	Yes	Video	Yes
UART 2	Yes	Video	Yes
UART 3	Yes	Video	Yes
UART 4	Yes	Video	Yes
UART 5	Yes	Video	Yes
UART 6	Yes	Video	Yes
UART 7	Yes	Video	Yes
UART 8	Yes	Video	Yes
UART 9	Yes	Video	Yes
UART 10	Yes	Video	Yes
UART 11	Yes	Video	Yes
UART 12	Yes	Video	Yes
UART 13	Yes	Video	Yes
UART 14	Yes	Video	Yes
UART 15	Yes	Video	Yes
UART 16	Yes	Video	Yes
UART 17	Yes	Video	Yes
UART 18	Yes	Video	Yes
UART 19	Yes	Video	Yes
UART 20	Yes	Video	Yes
UART 21	Yes	Video	Yes
UART 22	Yes	Video	Yes
UART 23	Yes	Video	Yes
UART 24	Yes	Video	Yes
UART 25	Yes	Video	Yes
UART 26	Yes	Video	Yes
UART 27	Yes	Video	Yes
UART 28	Yes	Video	Yes
UART 29	Yes	Video	Yes
UART 30	Yes	Video	Yes
UART 31	Yes	Video	Yes
UART 32	Yes	Video	Yes
UART 33	Yes	Video	Yes
UART 34	Yes	Video	Yes
UART 35	Yes	Video	Yes
UART 36	Yes	Video	Yes
UART 37	Yes	Video	Yes
UART 38	Yes	Video	Yes
UART 39	Yes	Video	Yes
UART 40	Yes	Video	Yes
UART 41	Yes	Video	Yes
UART 42	Yes	Video	Yes
UART 43	Yes	Video	Yes
UART 44	Yes	Video	Yes
UART 45	Yes	Video	Yes
UART 46	Yes	Video	Yes
UART 47	Yes	Video	Yes
UART 48	Yes	Video	Yes
UART 49	Yes	Video	Yes
UART 50	Yes	Video	Yes
UART 51	Yes	Video	Yes
UART 52	Yes	Video	Yes
UART 53	Yes	Video	Yes
UART 54	Yes	Video	Yes
UART 55	Yes	Video	Yes
UART 56	Yes	Video	Yes
UART 57	Yes	Video	Yes
UART 58	Yes	Video	Yes
UART 59	Yes	Video	Yes
UART 60	Yes	Video	Yes
UART 61	Yes	Video	Yes
UART 62	Yes	Video	Yes
UART 63	Yes	Video	Yes
UART 64	Yes	Video	Yes
UART 65	Yes	Video	Yes
UART 66	Yes	Video	Yes
UART 67	Yes	Video	Yes
UART 68	Yes	Video	Yes
UART 69	Yes	Video	Yes
UART 70	Yes	Video	Yes
UART 71	Yes	Video	Yes
UART 72	Yes	Video	Yes
UART 73	Yes	Video	Yes
UART 74	Yes	Video	Yes
UART 75	Yes	Video	Yes
UART 76	Yes	Video	Yes
UART 77	Yes	Video	Yes
UART 78	Yes	Video	Yes
UART 79	Yes	Video	Yes
UART 80	Yes	Video	Yes
UART 81	Yes	Video	Yes
UART 82	Yes	Video	Yes
UART 83	Yes	Video	Yes
UART 84	Yes	Video	Yes
UART 85	Yes	Video	Yes
UART 86	Yes	Video	Yes
UART 87	Yes	Video	Yes
UART 88	Yes	Video	Yes
UART 89	Yes	Video	Yes
UART 90	Yes	Video	Yes
UART 91	Yes	Video	Yes
UART 92	Yes	Video	Yes
UART 93	Yes	Video	Yes
UART 94	Yes	Video	Yes
UART 95	Yes	Video	Yes
UART 96	Yes	Video	Yes
UART 97	Yes	Video	Yes
UART 98	Yes	Video	Yes
UART 99	Yes	Video	Yes
UART 100	Yes	Video	Yes

**Power & Battery**

Voltage Meter	
Battery	1.00V
Battery	0.00A

---

**MAMBA F405USDJI Betaflight Flight Controller & F50PRO 50A 3-6S DSHOT600 FPV Racing Brushless ESC**

**FIRMWARE TARGET  Mamba F405US**

**Specyfikacja:  
Mamba F405US FC**

Nazwa: MAMBAF405 US Betaflight Flight Controller

Napięcie zasilania: 12.6-25V (3-6S)

**BEC: 5V 2.5A & 9V 2A**

MCU: STM32F405

Gyro: MPU6000

Pamięć Flash: 16MB

OSD: AT7456

Montaż: 30,5x30,5 M3

Waga: 7.5g

**LED Controller: 4 Set 2812 LED**

**UARTS: 6 Ports**