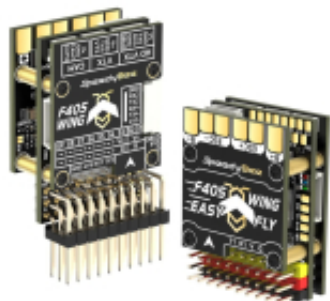


Link do produktu: <https://www.nobshop.pl/speedybee-fc-kontroler-lotu-f405-wing-mini-fixed-wing-p-4352.html>



## SpeedyBee FC Kontroler lotu F405 WING Mini Fixed Wing

Cena brutto	<b>189,99 zł</b>
Cena netto	<b>154,46 zł</b>
Dostępność	<b>Aktualnie niedostępny</b>
Czas wysyłki	<b>1 - 3 dni</b>
Kod producenta	<b>F405WING-MINI</b>
Producent	<b>SpeedyBee</b>

### Opis produktu

#### SpeedyBee FC Kontroler lotu F405 WING Mini Fixed Wing

##### Specyfikacja:

- MCU: STM32F405,
- Zasilanie: Lipo 2s-6s,
- Gyro: ICM-42688-P,
- Barometr: SPL006-001,
- Blackbox: Slot micro SD,
- Waga: 23g,
- Wymiary: 37x26x14.

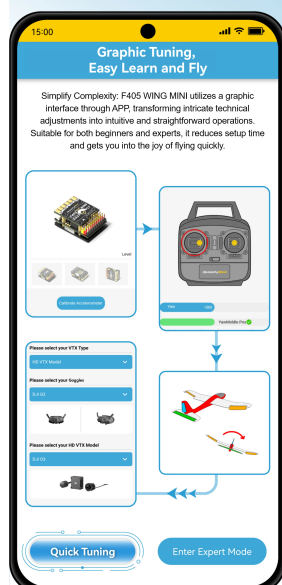
- BEC:

- FC BEC output - 5.2V 2A,
- Servo BEC output - 5V/6V 4A,

Compact. User-Friendly. Rich-Featured.



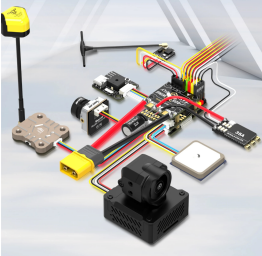
Small yet mighty, the compact size of F405 WING MINI doesn't compromise functionality. Its sleek design not only saves space but also cleverly integrates almost all essential features. From compact glider cockpits to sub-250g fixed-wing, F405 WING MINI fits effortlessly into any space.






### Neat and Easy Installation, Plug-and-Play

F405 WING MINI provides a tidy and straightforward installation experience. Whether connecting GPS or FPV cameras, the well-organized layout ensures quick and hassle-free connections. With labeled solder pads on the socket's back, it offers an efficient and reliable option for customization, perfectly balancing ease of use and professional-grade reliability.



### Wireless Tuning 2.0: Elevated Performance


**Instant and Stable Connectivity:** F405 WING MINI's wireless tuning function has been upgraded to version 2.0, offering a smoother and more reliable experience. App-based operations are now quicker with reduced loading times. Even for long-distance adjustments, it responds rapidly, ensuring efficient and simpler tuning.



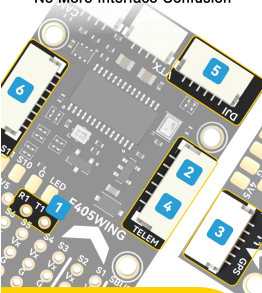
### Double the View, Double the Fun

**Explore Your Vision:** F405 WING MINI introduces dual camera switching without the need for complex mechanisms. With a simple one-button switch, you can effortlessly capture a wide range of perspectives from different cameras. Whether you want to capture breathtaking landscapes or follow formations, every flight is an exciting exploration filled with fresh angles and views.

\*This feature currently supports switching only between analog cameras.



### Full MCU Pinout BreakOut: No More Interface Confusion



UART

1

2

3

4

5

6

ELRS/TBS Receiver

SBUS Input or Other Peripherals

GPS Module

Telemetry Module or Other Peripherals

HD VTX or Analog VTX

On-board Wireless Controller

wygenerowano w programie shopGold





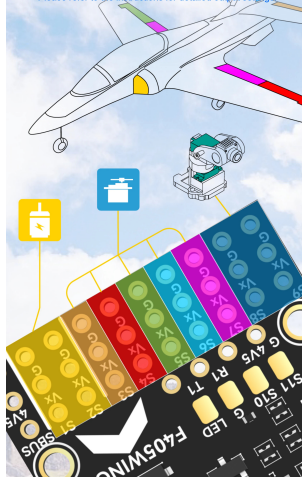
Up to 6 UART ports for easy expansion, allowing you to connect various external modules such as GPS, HD VTX.



Up to 11 PWM outputs  
9 straight-pin headers  
3 reserved solder pads  
For motor and servo control

It makes F405 WING MINI suitable for a variety of fixed-wing aircraft, including conventional layout aircraft, V-tail aircraft, aircraft with flaperons, and VTOLs.

*\*Please refer to the instructions for detailed output settings.*



### INAV / ArduPilot Dual Firmwares, Choose As You Like

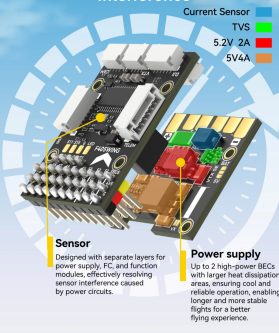
INAV offers a user-friendly setup for easy FPV flight handling, while ArduPilot provides advanced capabilities to explore more challenging flying styles.

Stabilize your flight, automatic take-off, Wing Racing, Formation Flying... whether you are a beginner or an expert, F405 WING MINI can fulfill all your flying dreams.



SUPPORTED FIRMWARE	INAV	ARDUPLOT
Easy to Use	★★★★★	★★★
Easy to Setup	★★★★★	★★★
Easy to Fly	★★★★★	★★★★★
Easy to Upgrade	★★★★★	★★★★★
Easy to Connect	★★★★★	★★★★★
Easy to Control	★★★★★	★★★★★
Easy to Monitor	★★★★★	★★★★★
Easy to Debug	★★★★★	★★★★★

### Multi-Layer PCB Design For Cool And Stable Operation Without Interference



#### Sensor

Designed with separate layers for power supply, FC, and function modules, effectively reducing sensor interference caused by power circuits.

#### Power supply

Up to 2 high-power BECs with larger heat dissipation areas, ensuring cool and reliable operation, enabling longer and more stable flights for a better flying experience.



Vertical Takeoff and Landing Fly Anywhere!

F405 WING MINI, with seamless vertical takeoff and landing, and intuitive tuning through NAWI 7.0 firmware, enables enthusiasts to explore vertical flight effortlessly. F405 WING MINI is versatile, providing convenience in urban and open environments.

HD & Ana VTX:  
Direct Plug-and-Play Interface

HD and Analog, easy flying choices. F405 WING MINI's plug-and-play interface supports both HD and Analog VTX.

\*The VTX power interface Vx offers two power supply options: direct battery voltage or integrated BEC Vx (Sharing the 5Vdc servo BEC voltage!)

\*By default, it is set to battery voltage (Ensure the VTX and camera input voltage range is compatible)



More Useful Features

Function Expansion

More features with stackable extensions. Stay tuned for updates!

2.0

Wireless Function Upgrades

Enhanced functionality through firmware updates. Stay tuned for updates!

BOOT

BOOT Button Operations

Firmware flashing or wireless modes with a single press.

BEC

Servo BEC External Power Option

Disconnect built-in servo BEC and boot Vx power with an external servo BEC.

Buzzer Mute Switch

Mute the buzzer easily with a switch during configuration.

Precision Current Sensor

Optimized current scale for low current range (<10A) during cruise.



Dimensions

26mm/1.02in

14mm/0.55in

37mm/1.45in



Weight: 23g  
(including wireless USB Extender)

Package

F405 WING MINI PCB board x1

F405 WING MINI FC board x1

F405 WING MINI Wireless USB Extender x1

F405 WING MINI Custom Install Shield Board x1

F405 WING MINI Standard Install Shield Board x1

90 Degree pin Header(3x10) x1

straight pin Header(1x10) x3

M2 x 6.5 copper Standoff Spacer x5

M2x5.5 small head cross screw x20

White straight pin header(1x4) x1

M2x3-scopper Standoff Spacer x5

35V 470uF Low ESR Capacitor x1

4pin-SH 0mm Wireless USB Extender Cable (150mm) x1

4pin-SH 0mm Analog VTX Cable (300mm) x1

4pin-SH 0mm GPS Module Cable without Connector on another end (200mm) x1

4pin-SH 0mm Digital VTX Cable (300mm) x1

4pin-SH 0mm to 3pin-2017 25mm FPV Cam Cable (200mm) x1

4pin Dupont single-head Cable (100mm) x1

wygenerowano w programie shopGold

