

Link do produktu: <https://www.nobshop.pl/matek-crsf-to-pwm-6-konwerter-p-4028.html>

Matek CRSF to PWM 6 konwerter



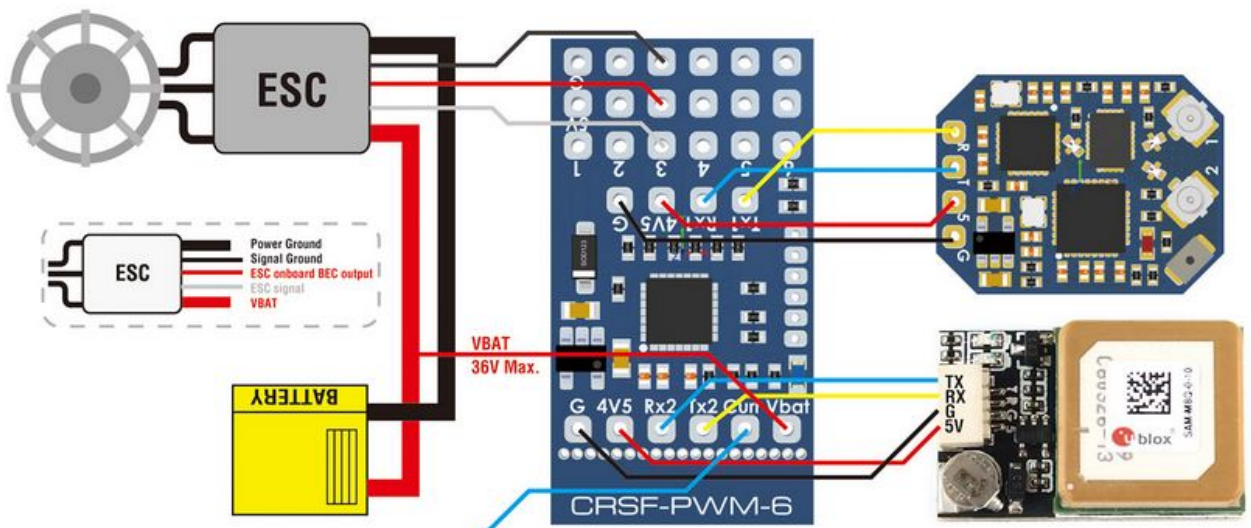
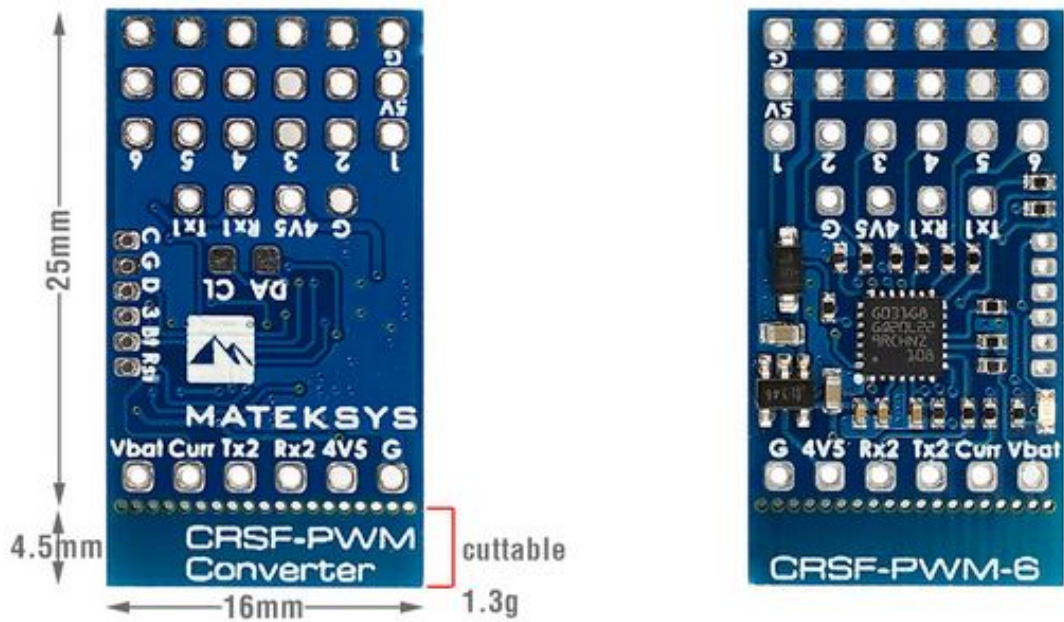
Cena brutto	32,69 zł
Cena netto	26,58 zł
Dostępność	Aktualnie niedostępny
Czas wysyłki	1 - 3 dni
Producent	Matek Systems

Opis produktu

Matek CRSF to PWM 6 konwerter

Specyfikacja:

- **Compatible with CRSF protocol receiver only**
- **Support any CRSF protocol receivers (including 433MHz, 868MHz, 915MHz, 2.4GHz)**
- 6x PWM outputs
- PWM frequency configurable (50Hz default, 100,160,330, 400Hz)
- 2x UARTs (for Receiver and GPS)
- Telemetry ID: RxBt, Curr, Capa, Bat%, GPS, GSpd, Hdg, Alt, Sats
- 36V Max. battery voltage sense (1K:10K voltage divider built-in)
- Compatible with external Current sensor (0~3.3V)
- Vbat and Current sensor scale configurable
- Failsafe value auto set
- Firmware upgradeable
- Rated voltage: 4~9V @5V pad, 0~36V @Vbat, 0~3.3V @Curr
- **No 5V regulator built-in, Servos must be powered via 5V pad by external 5V source.**
- 25mm x 16mm, 1.3g
- Packing: 1x CRSF-PWM-6, Dupont 2.54 pins

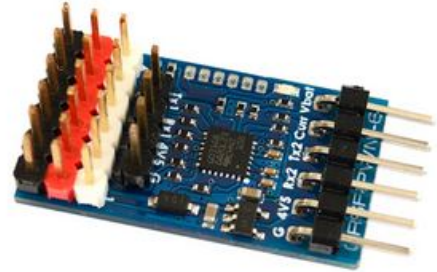


External current sensor
0-3.3V

"4V5" voltage = "5V" voltage - 0.3V

WARNING:

Double check the receiver and GPS rated voltage.
Make sure the voltage on 5V pad is not higher than receiver and GPS rated voltage.



Tips

If receiver and PWM board are soldered together through the Dupont pins.
You may remove 2x 0ohm resistors when you want to flash receiver via UART.
Bridge the pad with a drop of tin after flashing.
You may also flash receiver via WIFI.

- *** Dupont 2.54 pins are shipped unsoldered
- *** Receiver is not included in package