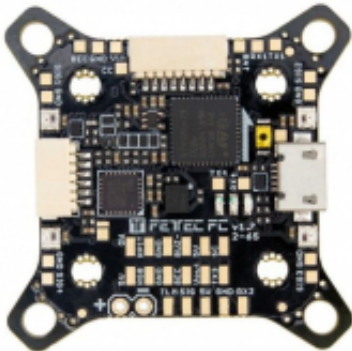


Link do produktu: <https://www.nobshop.pl/kontroller-lotu-fc-fettec-kiss-fc-g4-osd-p-3725.html>



Kontroller lotu FC FETtec KISS FC G4 OSD

Cena brutto	395,99 zł
Cena netto	321,94 zł
Dostępność	Aktualnie niedostępny
Czas wysyłki	1 - 3 dni
Producent	FetTec

Opis produktu

Kontroller lotu FC FETtec KISS FC G4

Wersja OSD

Product information "FETtec FC G4 v1.7"

Features:

- Latest STM32G473 Processor
 - 180Mhz + Math accelerator
 - Gyro IIM-42652 SPI
- Supply voltage 6-27V (2S-6S Lipo)
- 2x dedicated onboard BEC (2A each)
 - 5V BEC for RX
 - 5V/16V BEC for VTX (switchable and real Pit*)
- Improved IO protection
 - All IOs of the microcontroller e.g. in connectors or solder pads are protected against voltage or current spikes
- 2x 8 pin connector for solder free ESC connection
 - Connector 1: ESC signal 1-4, telemetry, VCC, GND
 - Connector 2: ESC signal 5-8 (depending on UAV type 1-4), telemetry, VCC, GND
- 1x 8 pin connector for solder free VTX, cam connection and OSD or digital systems
 - real Pit* VCC, GND, Video in, Video out, BEC 5V/16V, VCS/TX3, RX3
- 2x 6 pin connectors for serials
 - RX1, TX1, 3.3V, VCC, 5V, GND

-
- RX3, VCS/TX3, RGB LED, VCC, 5V, GND
 - 1x 4 pin connector for receiver
 - Signal, TLM, 5V, GND
 - 5 UART serials
 - UART 1 free
 - UART 2 used for Receiver
 - UART 3 free
 - UART 4 used for onboard OSD, can be set free
 - UART 5 used for ESCs / TLM / Onewire
 - 4 ESC solder pads (Signal/GND) in each corner
 - Buzzer pads
 - 4 tiny RGB LEDs (selectable color)
 - Supported ESC protocols
 - PWM, Oneshot125, Oneshot42, Dshot150/300/600/1200/2400, FETtec Onewire
 - FETtec Alpha FC firmware (KISS FC firmware flashable)
 - Updated onboard OSD
 - Graphic OSD (STM32)
 - Full KISS Tuning
 - Filter (PIDs, Rates, Settings)
 - LED control (RGB LED, Racewire)
 - VTX
 - Live data graphs (Voltage, motor rpm, current, motor temp, gyro values, link quality)
 - KISS GPS support + live map
 - Custom graphic pilot logo
 - Stick overlay
 - Custom layout
 - can be deactivated for usage of digital systems
 - Connector type: JST-SH-1mm

*real Pit-Mode: A power supply pin which is remotely switchable

Dimensions:

- Maximum outside dimensions: 37,2 x 37,2mm, without outside tips 30 x 30mm
- Mounting hole arrangement:
 - 20 x 20mm with M2 mounting hole (expandable to M3)
 - 30 x 30mm with M3 mounting hole
 - 30 x 30mm mounting hole tips are removable to reduce overall FC size

-
- Overall height: 7,9mm
 - Weight: 5,37g

Firmware:

- FETtec Alpha FC firmware (KISS FC firmware flashable)
- FETtec OSD Firmware

Scope of delivery:

- 1x FETtec FC G4 v1.7
- 1x 8 pin cable (open on one side)
- 1x 6 pin cable (open on one side)
- 1x 4 pin cable (open on one side)

Available downloads:

- [Download FETtec FC G4 manual from fettec.net](#)
- [Download FETtec FC G4 v1.7 manual from fettec.net](#)

Pliki do pobrania:

- [FETtec-FC-G4-manual.pdf](#)
- [FETtec-FC-G4-v1-7-manual.pdf](#)