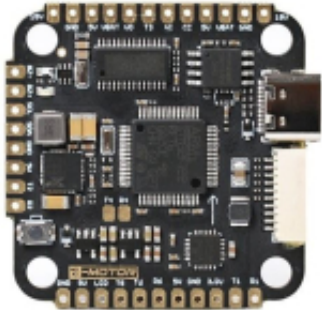


Dane aktualne na dzień: 25-06-2026 14:55

Link do produktu: <https://www.nobshop.pl/kontroler-lotu-t-motor-pacer-f7-single-sided-p-3919.html>

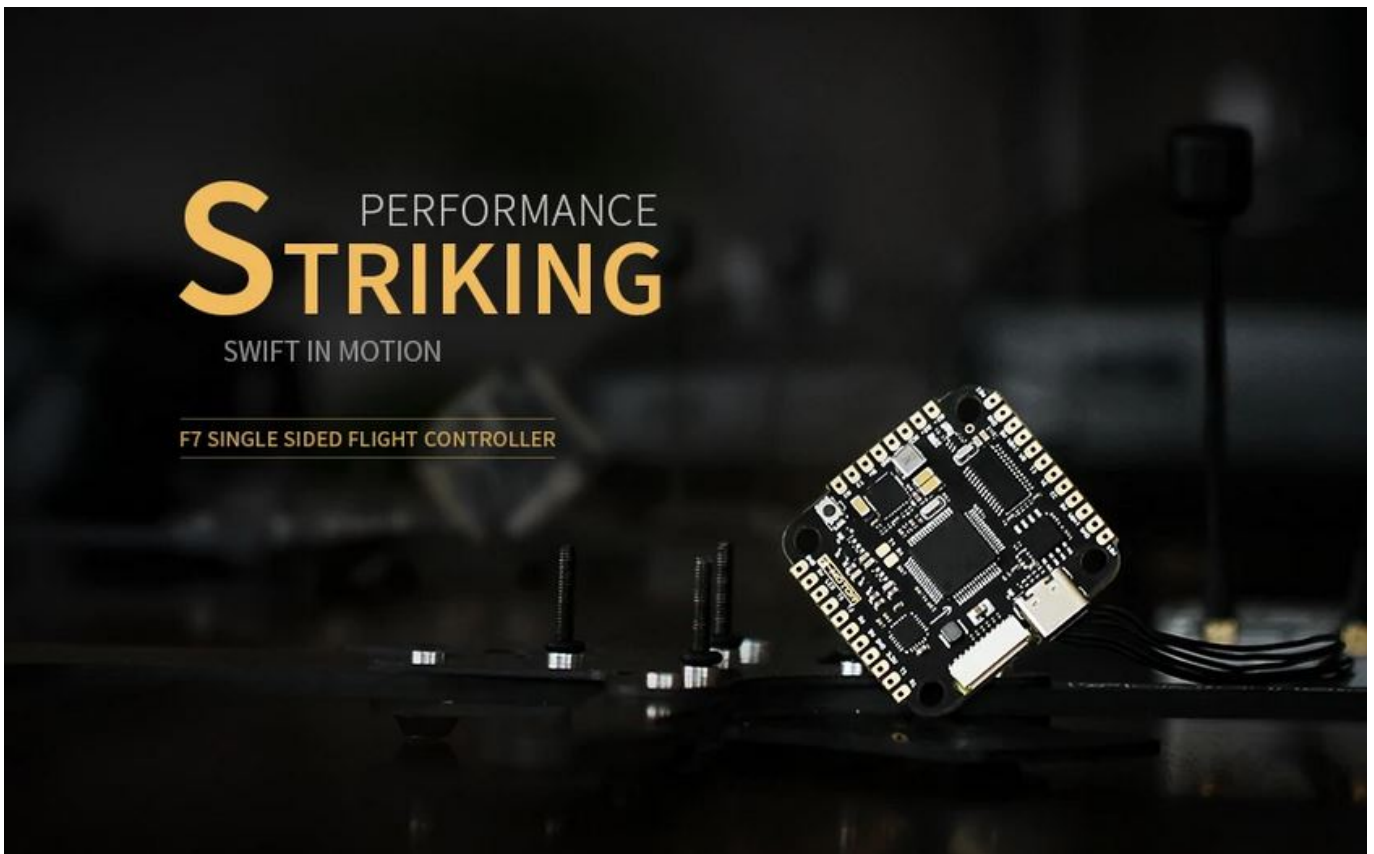


## Kontroler lotu T-Motor Pacer F7 Single Sided

Cena brutto	<b>259,99 zł</b>
Cena netto	<b>211,37 zł</b>
Dostępność	<b>Aktualnie niedostępny</b>
Czas wysyłki	<b>1 - 3 dni</b>
Producent	<b>T-Motor</b>

### Opis produktu

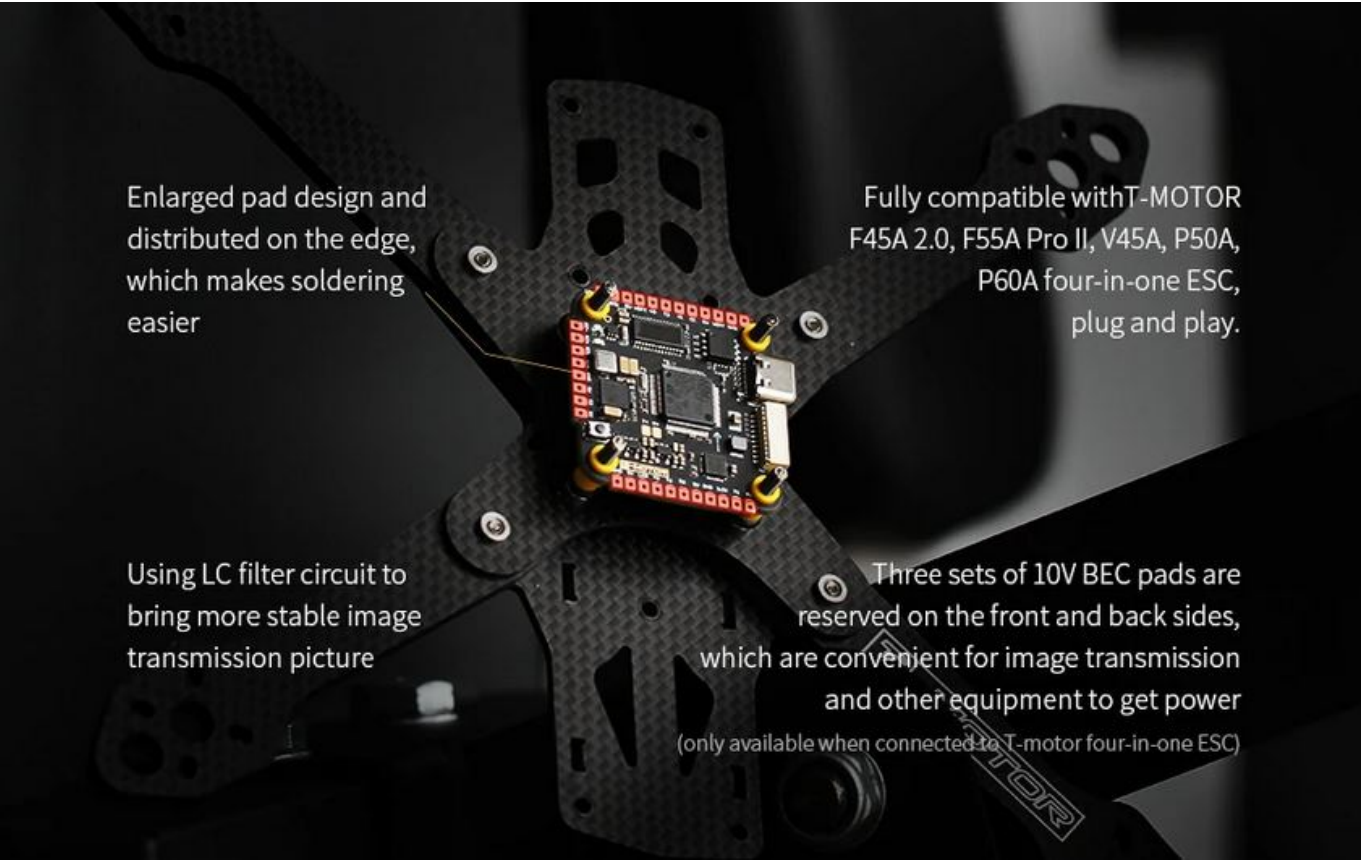
#### Kontroler lotu T-Motor Pacer F7 Single Sided





T-MOTOR new flight control Pacer F7. It adopts a single-sided design, which can bring a smaller stack height. It also supports DJI AIR UNIT. plug and play with the cable inside the package, It uses STM32 F722 main control chip, running BetaFlight firmware.

Adopt Type-C interface for more convenient connection



Enlarged pad design and distributed on the edge, which makes soldering easier

Fully compatible with T-MOTOR F45A 2.0, F55A Pro II, V45A, P50A, P60A four-in-one ESC, plug and play.

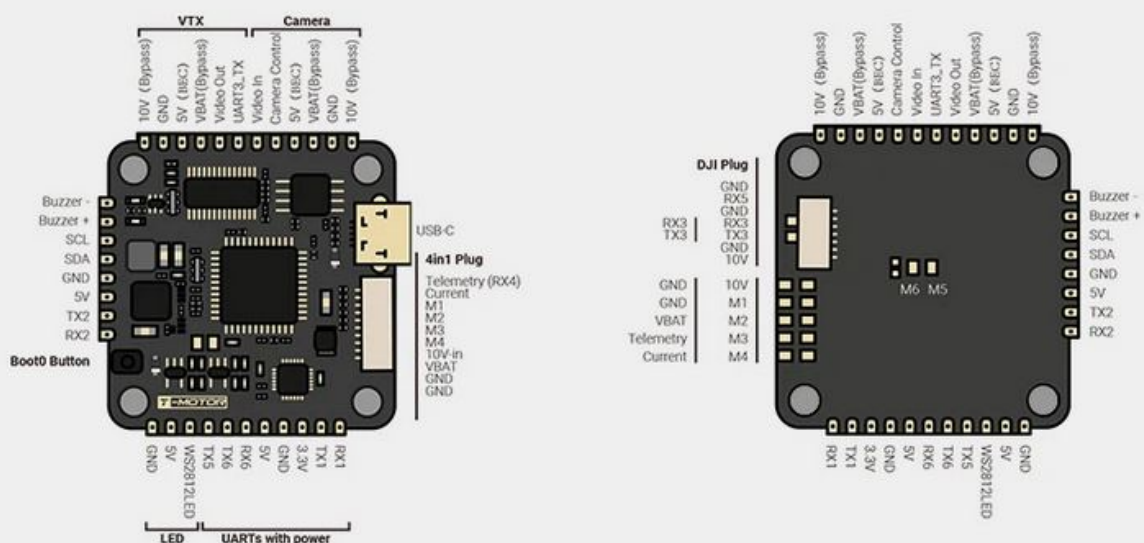
Using LC filter circuit to bring more stable image transmission picture

Three sets of 10V BEC pads are reserved on the front and back sides, which are convenient for image transmission and other equipment to get power (only available when connected to T-motor four-in-one ESC)

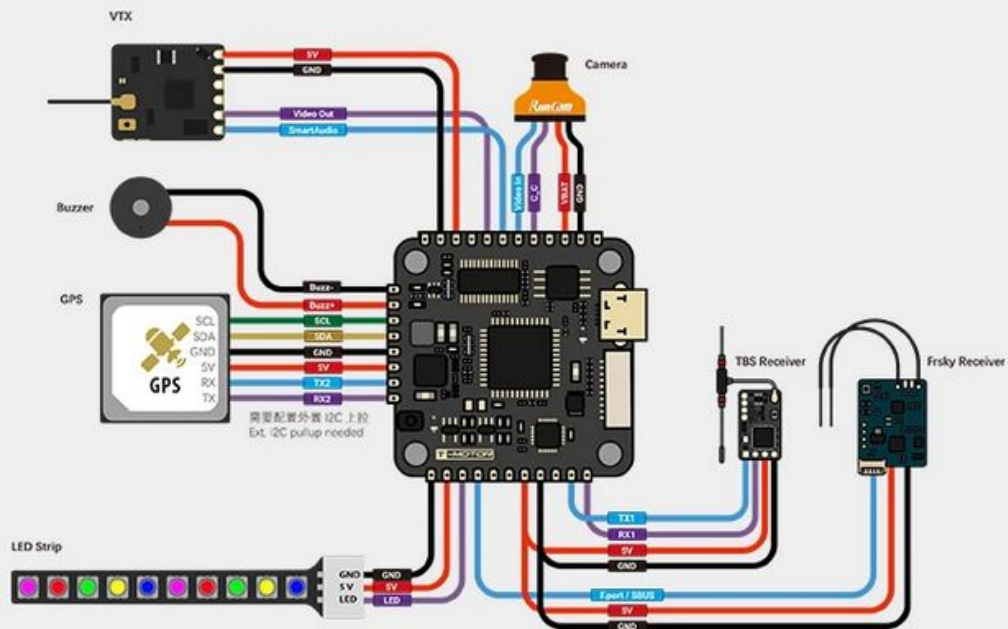
## PERFORMANCE CHARACTERISTICS AND PARAMETERS

1. Enlarged pad design and distributed on the edge, which makes soldering easier
2. Integrated OSD chip, support BetaFlight OSD
3. With 6 hardware uart serial ports, more devices can be connected
4. Support 3-6S Lipo direct power supply
5. Support 5V/3A BEC power supply
6. Support analog camera control function
7. Onboard 16M flash memory chip for black box data recording (Blackbox)
8. Using LC filter circuit to bring more stable image transmission picture
9. Fully compatible with T-MOTOR F45A 2.0, F55A Pro II, V45A, P50A, P60A four-in-one ESC, plug and play
10. Three sets of 10V BEC pads are reserved on the front and back sides, which are convenient for image transmission and other equipment to get power (only available when connected to T-motor four-in-one ESC)
11. Installation aperture: 30.5mm\*30.5mm, weight: 7.5g.

## INTERFACE DEFINITION FIGURE



## CONNECTION DIAGRAM



### Specyfikacja:

Zasilanie - Lipo 3s-6s  
Gyro - MPU6000  
Blackbox - 16MB  
BEC - 5V 3A  
Waga - 7.5g  
Wymiary - 40x39mm (40x41mm z USB)