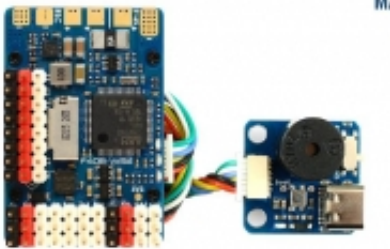


Dane aktualne na dzień: 27-04-2026 20:11

Link do produktu: <https://www.nobshop.pl/kontroler-lotu-matek-f405-wse-p-2748.html>

Kontroler lotu FC Matek F405 WSE



| | |
|--------------|------------------------------|
| Cena brutto | 269,99 zł |
| Cena netto | 219,50 zł |
| Dostępność | Aktualnie niedostępny |
| Czas wysyłki | 1 - 3 dni |
| Producent | Matek Systems |

Opis produktu

Kontroler lotu FC Matek F405 WSE

Kontroler lotu F405 WSE marki MatekSystems to FC przeznaczone do większych dronów oraz latających bezzałogowych statków powietrznych. Kontroler zawiera na swoim wyposażeniu OSD AT7456E, Barometr DPS310, Blackbox, 6 portów UART do podpięcia zewnętrznych modułów, 3 porty ADC (Vbat, Current, RSSI), 10 portów PWM do podpięcia regulatorów silników czy pasków LED. Oprócz tego posiada wbudowane układy BEC do różnych perypetiów takich jak serwomechanizmy itp.. Zasilany może być akumulatorami LiPo 2-6S. Posiada otwory montażowe 25 x 25mm i waży 20g.

LAYOUT

+ & -: Battery & ESC power pads, 6-30V DC(2-6S LIPO).

Battery voltage Sensor: 1K:10K, Scale 1100(INAV)
 Current Sensor: 132A, 3.3V ADC, Scale 250(INAV)
 Current Sense resistor: 0.5mR, 60A continuous, 132A burst.

INAV Plane mixer
 S1/S2: ESC signal
 S3/S4/S5/S6/S7/S8/S9: Servo signal

ArduPilot
 S1-S9: ESC or Servo

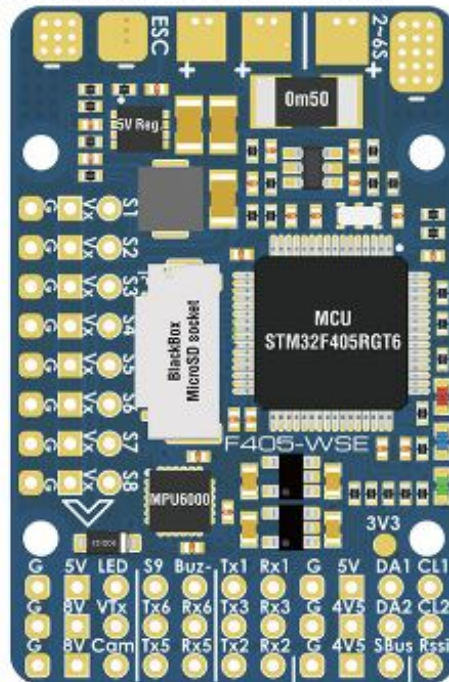
Vx: BEC 5V/6V for servos, 5A cont.
 Default is 5V

DO NOT connect the ESC onboard BEC output(Red wire) to Vx pad.

LED: 2812 LED signal output
 PWM10 with ArduPilot

VTx: Analog Video OUT to Video Transmitter
 Cam: Camera video IN

8V: onboard BEC 8V 1.5A cont. Max.2A



LED 3.3: Red, 3.3V Status
 LED 0: Blue, FC Status
 LED 1: Green, FC Status

3V3: LD03.3V 200mA
 5V: onboard BEC 5V 2A cont. Max.3A
 4V5: 4.4-4.8V, Max.500mA
 *** the voltage is also supplied when connecting via USB

CL1 & DA1: I2C1_SCL & SDA
 CL2 & DA2: I2C2_SCL & SDA

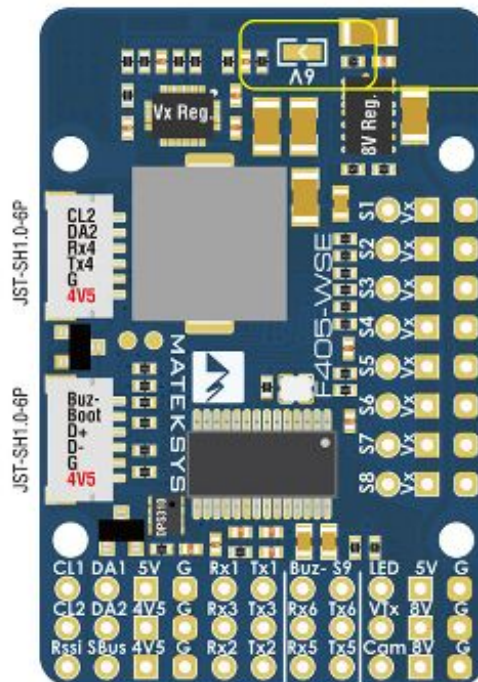
Rssi: Analog RSSI IN

Tx1/Rx1: UART1_TX & RX
 Tx3/Rx3: UART3_TX & RX
 Tx5/Rx5: UART5_TX & RX
 Tx6/Rx6: UART6_TX & RX

Rx2: UART2_RX, PPM share RX2 pad
 Tx2: UART2_TX
 SBus: Uart2_RX with inversion for SBus receiver protocol
 *** Softserial1_TX is enabled on Tx2 pad by default in INAV



Φ3mm, 16mm mounting



Size: 44x29x10mm
 Weight: 20g w/ bottom plate & USB extender
 Holes: Φ2mm, 25mm mounting

Specyfikacja:

- MCU: 168MHz STM32F405RGT6 1MB Flash
- IMU: MPU6000 (SPI1)
- Baro: DPS310 (I2C1)
- OSD: AT7456E (SPI2)
- Blackbox: MicroSD socket (SPI3)

- VCP & 6x UARTs,
- 1x Softserial_Tx option (TX2 pad, INAV)
- 10x PWM outputs(S1~S9, LED)
- 2x I2C
- 3x ADC (voltage, current, RSSI)
- 3x LEDs for FC STATUS (Blue, Green) and 3.3V indicator(Red)
- Built in inverter on UART2-RX for SBUS input
- PPM/UART Shared: UART2-RX

- 1x SH1.0_6pin connector (4V5/G/TX4/RX4/DA2/CL2) for GPS/compass
- 1x SH1.0_6pin connector for external USB and buzzer

- DJI FPV OSD: any spare UART
- FrskyOSD: any spare UART

Power

- 6~30V DC IN (2~6S LiPo)
- 132A high-precision Current Sense (Scale 250)
- PDB/Current sense resistor: 60A continuous, 132A burst.
- BEC 5V 2A for FC & Peripherals
- BEC Vx 5A for servos, 5V/ 6V option
- BEC 8V 1.5A for VTX and camera
- LDO 3.3V 200mA
- Battery Voltage Sensor: 1k:10k

FC Firmware

- INAV Target: MATEKF405SE
- ArduPilot hwdef: MATEKF405WING

Physical

- Dimensions: 44 x 29 x 10 mm
- Mounting: 25 x 25mm, Φ 2mm
- Weight: 20g w/ bottom plate and USB/buzzer adapter