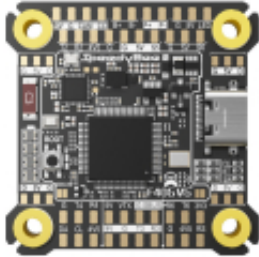


Dane aktualne na dzień: 02-04-2026 14:40

Link do produktu: <https://www.nobshop.pl/kontroler-lotu-fc-speedybee-f405-v5-30x30-p-5016.html>



## Kontroler lotu FC SpeedyBee F405 v5 30x30

|                |                   |
|----------------|-------------------|
| Cena brutto    | <b>242,00 zł</b>  |
| Cena netto     | <b>196,75 zł</b>  |
| Dostępność     | <b>Dostępny</b>   |
| Czas wysyłki   | <b>1 - 3 dni</b>  |
| Kod producenta | <b>SB-F405-V5</b> |
| Producent      | <b>SpeedyBee</b>  |

Opis produktu

### Kontroler lotu FC SpeedyBee F405 v5

Oferta dotyczy wyłącznie kontrolera lotu

### Specyfikacja

---

|                                |   |
|--------------------------------|---|
| Product Name                   | SpeedyBee F405 V5 30.5×30.5mm Model Aircraft Flight Controller  |
| MCU                            | STM32F405   |
| IMU (Gyro)                     | ICM42688P   |
| USB Port Type                  | New Type-C interface  |
| Barometer                      | SPA06-003   |
| OSD Chip                       | AT7456E   |
| Full-featured Bluetooth Tuning | Supported. Connect via SpeedyBee App for FC firmware flashing and parameter tuning.   |
| Wireless FC Firmware Upgrade   | Supported   |
| DJI Air Unit Connection        | Supports 6-pin direct plug-in or solder connection  |
| Blackbox                       | Supported, built-in 16MB storage chip   |
| Input Voltage                  | 3-6S LiPo battery   |
| Independent 5V BEC Output      | 9 groups (4× +5V pads on front, 1× BZ+ buzzer pad, and 4× +5V pads at the corners for external LEDs). Total output current: 2.5A.   |
| Independent 9V BEC Output      | 2 groups (1× 9V pad on front, 1× 9V output in a connector on the back). Total output current: 2.5A. Supports PINIO remote on/off control.   |
| MCU & Gyro Power               | Independent LDO   |
| 3.3V Output                    | 1 group (1× 3.3V pad on front)  |
| 4.5V Output                    | 3 groups (3× 4.5V pads on front). Can power receiver and GPS when FC is powered via USB. Max output current: 1A.  |
| ESC Signal                     | M1-M4 pads and 10-pin connector on the back   |
| Servo Signal                   | S5-S6 pads on the front   |
| ESC Telemetry Input            | Supported (UART5)   |
| Betaflight Camera Tuning Pad   | Supported (CC pad on front)   |
| I2C                            | Supported (GPS connector + pads)  |
| UART                           | UART1 (Bluetooth); UART2 (front pads for receiver); UART3 (DJI VTX pads + rear SH1.0-6-pin); UART4 (GPS pads + front SH1.0-6-pin); UART5 (TLM); UART6 (receiver pads + rear SH1.0-4-pin)  |
| ST LED Pads                    | Supported, on front G/5V/LED pads; controlled by FC firmware  |
| Meteor LED Strip Pads          | Supported. Switch between SB-LED and ST-LED modes via BOOT button or App. In SB-LED mode, controlled by ESP32 Bluetooth chip.   |
| Buzzer Pads                    | Supported   |
| BOOT Button                    | [A] Hold BOOT while powering on to force DFU mode for flashing.<br>[B] When powered and in standby, short-press cycles LED display modes; long-press switches SB-LED/ST-LED. In ST-LED mode, LED1-LED4 are controlled by FC firmware. |
| RSSI Pads                      | Supported   |
| SmartPort                      | Not supported   |
| Supported FC Firmware          | Betaflight  |
| Firmware Target Name           | SPEEDYBEEF405V5   |
| Factory Firmware Version       | Betaflight 4.5.2  |
| Configurator Version           | Betaflight 10.10.0  |
| Mounting Holes                 | 30.5 × 30.5mm (Ø4mm), side opening  |
| Dimensions                     | 39mm (L) × 39mm (W) × 4.9mm (H)   |
| Weight                         | 8.1g  |